



# FOR SALE OR LEASE

7318 S Revere Pky, Centennial



Reduced Sale Price: 

~~\$5,000,000~~ \$4,500,000

- 18,037 SF Flex Building
- Owner/User Purchase
- Centennial Business Park
- Immediate Occupancy

**AMY ALDRIDGE**

PARTNER

amy@tributaryre.com

720-217-7340

**JONA BEHM**

VICE PRESIDENT

jona@tributaryre.com

720-394-8694

# 7318 S Revere Parkway



Building Size: 18,037 SF

Year Built: 2000

OPEX: Est. \$9.25/SF Est. 2024

Parking: 28 Spaces

Layout: Office convertible to warehouse space

Ceiling Height: 10' | Clear Height: 12'

Fully Sprinklered

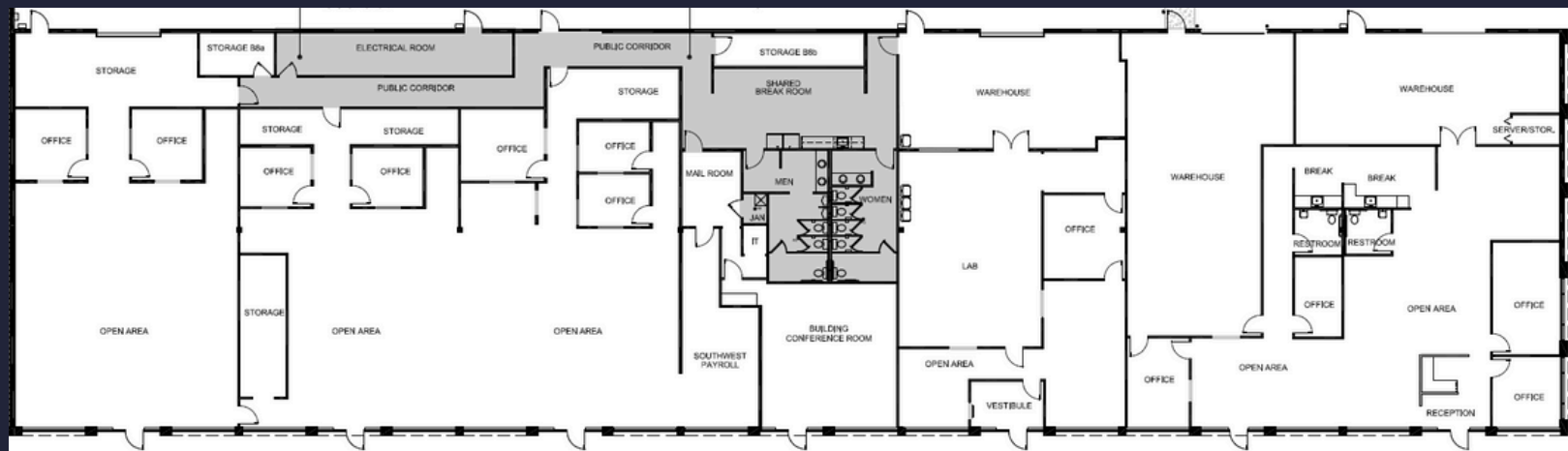
3 Drive-in Doors

Building Signage + New Monument Signage

New Paint

New parking lot paving

3 Phase Power



**AMY ALDRIDGE**

PARTNER

[amy@tributaryre.com](mailto:amy@tributaryre.com)

720-217-7340

**JONA BEHM**

VICE PRESIDENT

[jona@tributaryre.com](mailto:jona@tributaryre.com)

720-394-8694



# 7318 S Revere Parkway



**AMY ALDRIDGE**

PARTNER

[amy@tributaryre.com](mailto:amy@tributaryre.com)

720-217-7340

**JONA BEHM**

VICE PRESIDENT

[jona@tributaryre.com](mailto:jona@tributaryre.com)

720-394-8694

