



FOR SALE OR LEASE

7318 S Revere Pky, Centennial

Sale Price: \$5,000,000
18,037 SF Flex Building
Owner/User Purchase
Centennial Business Park
Immediate Occupancy



AMY ALDRIDGE

PARTNER

amy@tributaryre.com

720-217-7340

JONA BEHM

VICE PRESIDENT

jona@tributaryre.com

720-394-8694

7318 S Revere Parkway



Building Size: 18,037 SF

Year Built: 2000

OPEX: Est. \$9.25/SF Est. 2024

Parking: 28 Spaces

Layout: Office convertible to warehouse space

Ceiling Height: 10' | Clear Height: 12'

Fully Sprinklered

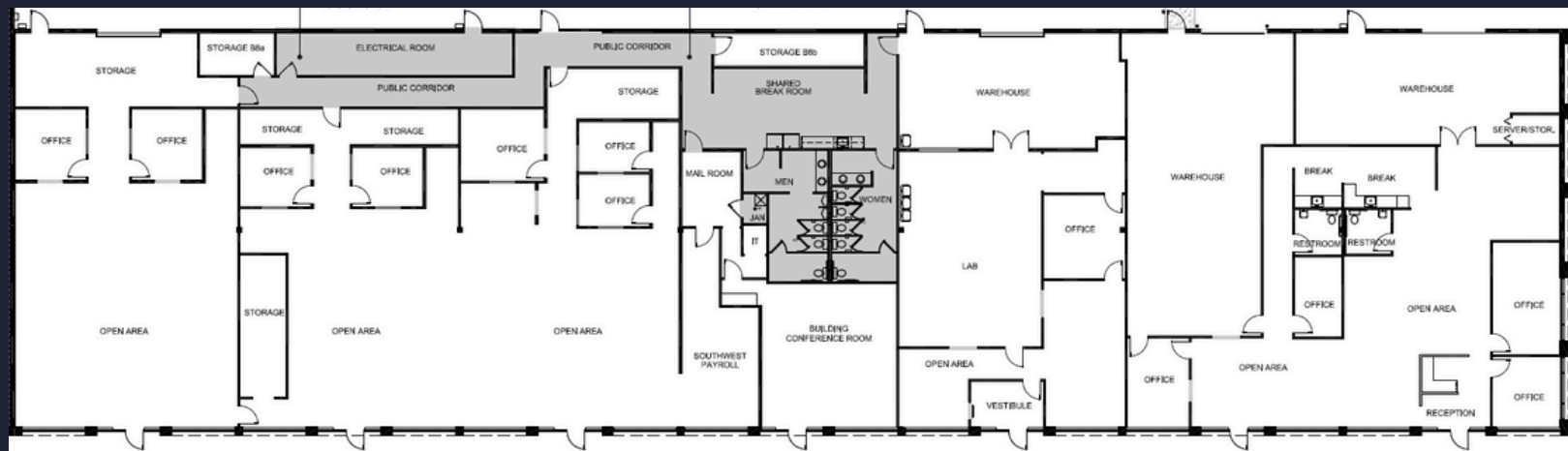
3 Drive-in Doors

Building Signage + New Monument Signage

New Paint

New parking lot paving

3 Phase Power



AMY ALDRIDGE

PARTNER

amy@tributaryre.com

720-217-7340

JONA BEHM

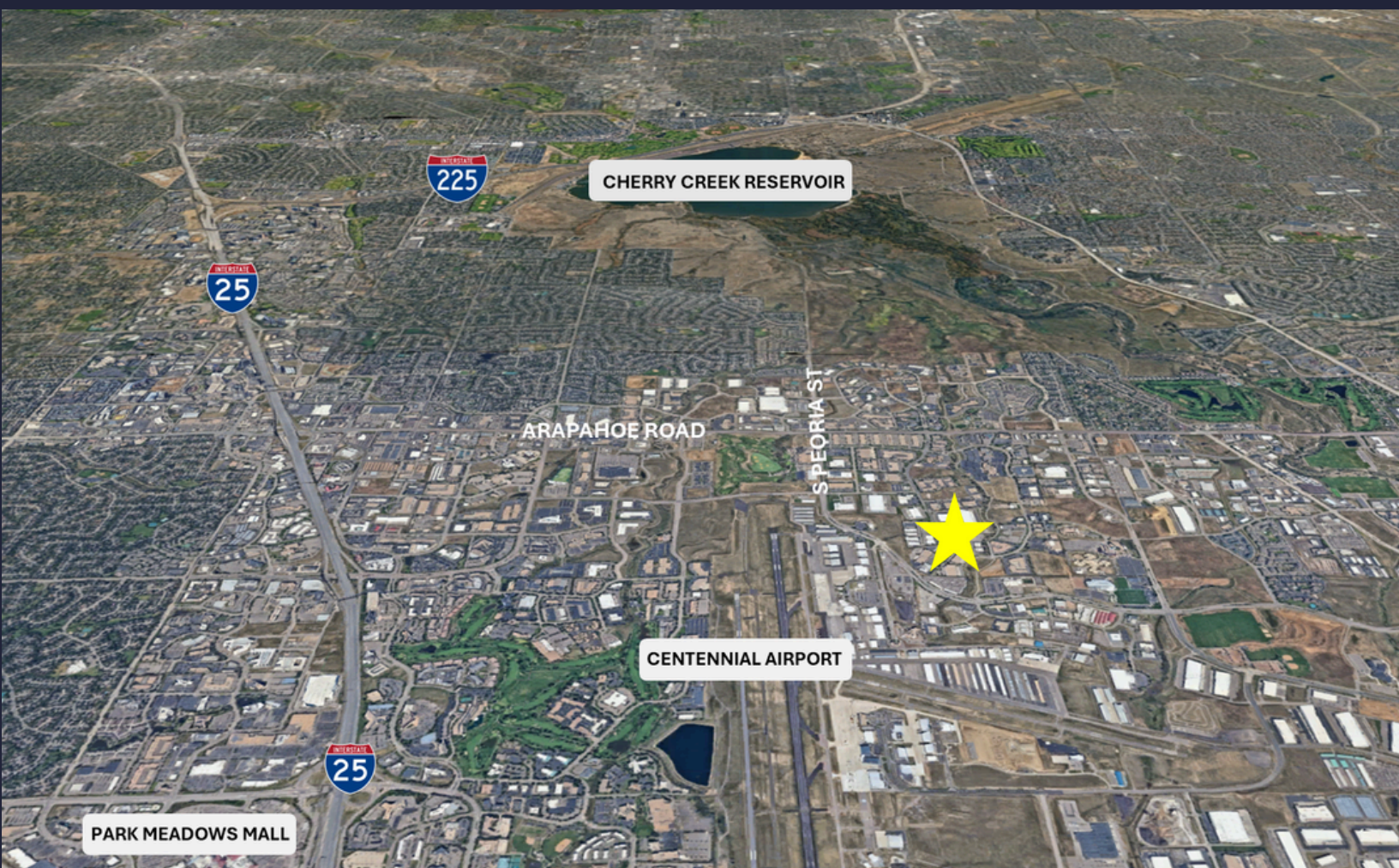
VICE PRESIDENT

jona@tributaryre.com

720-394-8694



7318 S Revere Parkway



AMY ALDRIDGE

PARTNER

amy@tributaryre.com

720-217-7340

JONA BEHM

VICE PRESIDENT

jona@tributaryre.com

720-394-8694

