



FOR LEASE

1660 17th Street - Suite 350
Denver

1,454 RSF

Term: 3-5 Years

Rental Rate: \$15/SF NNN

OPEX: \$20/SF

Open Office Layout

Immediate Occupancy



AMY ALDRIDGE

PARTNER

amy@tributaryre.com

720-217-7340

MAX STANTON

ASSOCIATE BROKER

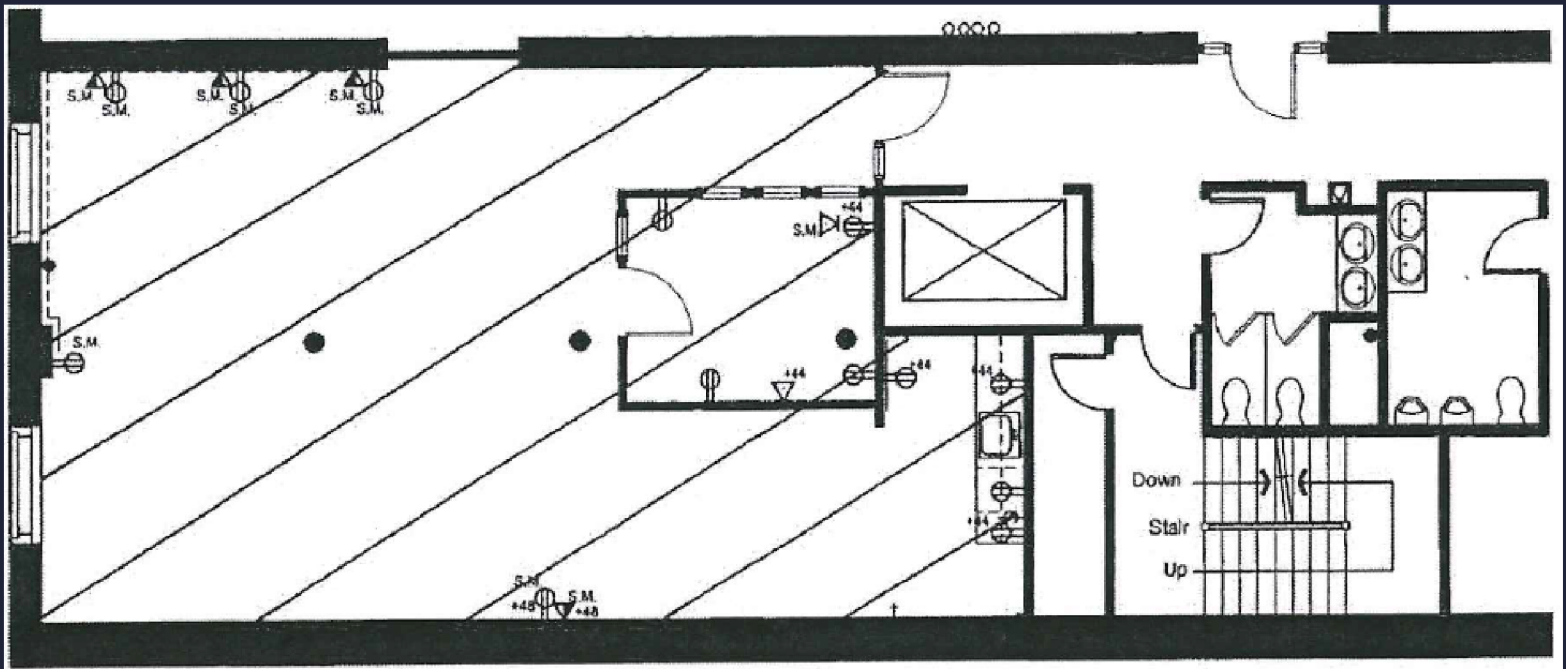
max@tributaryre.com

719-510-4940

About The Space...



- SMALL CONFERENCE ROOM
- SMALL KITCHENETTE
- 100% CARD ACCESS
- EXPOSED BRICK
- GOOD NATURAL LIGHT
- UNION STATION ADJACENT



AMY ALDRIDGE
PARTNER
amy@tributaryre.com
720-217-7340

MAX STANTON
ASSOCIATE BROKER
max@tributaryre.com
719-510-4940



About The Building...



1660 17th Street

Constructed in 1885, The Struby-Estabrook Building was one of the first great warehouses on Wynkoop Street. An Edbrooke Gem next to the Oxford Hotel, this building commands one of the most prominent corners in Denver. Its proximity to the new Union Station redevelopment will forever cement this location as one of the best in the country.

LoDo is Denver's oldest neighborhood and premier live/work/play destination. Demand in this slice of the market is driven by employers utilizing highly amenitized workspaces to attract top talent in a competitive labor market, and tenants are willing to pay a premium to be located in the area



AMY ALDRIDGE

PARTNER

amy@tributaryre.com

720-217-7340

MAX STANTON

ASSOCIATE BROKER

max@tributaryre.com

719-510-4940

