



FOR SUBLEASE

11080 Circle Point Rd, Suite 140,
Westminster

ANDY CULLEN

PARTNER/MANAGING BROKER

andy@tributaryre.com

720-933-9411

RYAN PEIRONA

ASSOCIATE BROKER

ryanp@tributaryre.com

925-808-8970

5,326 RSF

Term: Through December 2026

Rental Rate: Negotiable

11080 CIRCLE POINT RD - SUITE 140

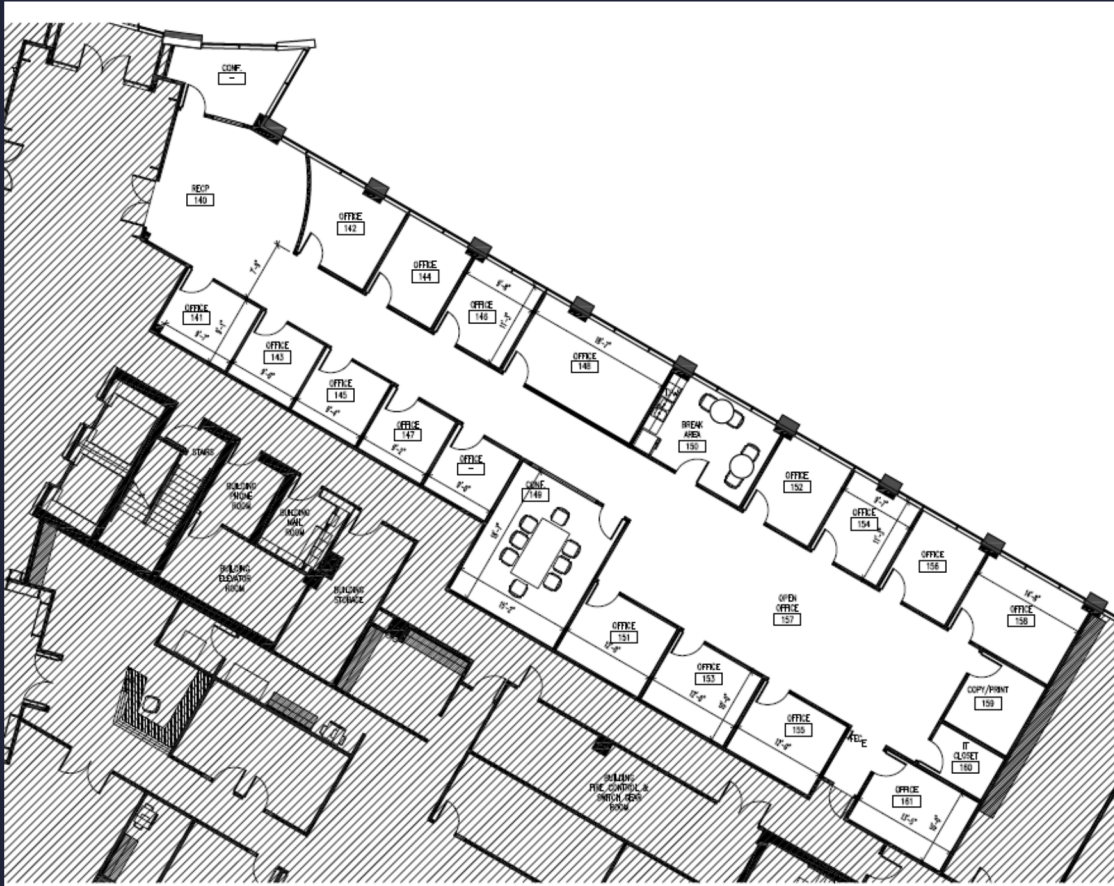


ANDY CULLEN
PARTNER/MANAGING BROKER
andy@tributaryre.com
720-933-9411

RYAN PEIRONA
ASSOCIATE BROKER
ryanp@tributaryre.com
925-808-8970



11080 CIRCLE POINT RD - SUITE 140



HIGHLIGHTS

- LAYOUT:
 - 17 PRIVATE OFFICES
 - 2 BREAKROOMS
 - LARGE CONFERENCE ROOM
 - PRINTER/COPY ROOM
 - STORAGE ROOM
 - OPEN AREA
 - RECEPTION
- OTHER:
 - CAFE
 - FITNESS CENTER
 - PARKING RATIO: 4.3/1000 SF
 - HIGH SPEED FIBER INTERNET

ANDY CULLEN

PARTNER/MANAGING BROKER
andy@tributaryre.com

720-933-9411

RYAN PEIRONA

ASSOCIATE BROKER
ryanp@tributaryre.com

925-808-8970



11080 CIRCLE POINT RD - SUITE 140



11080 Circle Point Rd

Circle Point is a two-building, Class A complex located in the Northwest submarket of Denver, Colorado. The submarket is located along the main thoroughfare between Boulder and Denver, and is known for its high quality of life, technology-related industries and proximity to some of Colorado's largest employment pools. Within the market, Circle Point has a desirable identity as one of the most visible and recognizable office projects in Northwest Denver.



ANDY CULLEN

PARTNER/MANAGING BROKER
andy@tributaryre.com

720-933-9411

RYAN PEIRONA

ASSOCIATE BROKER
ryanp@tributaryre.com

925-808-8970

