

FOR SUBLEASE

Zeppelin Station, 3501
Wazee Street, Suite 103

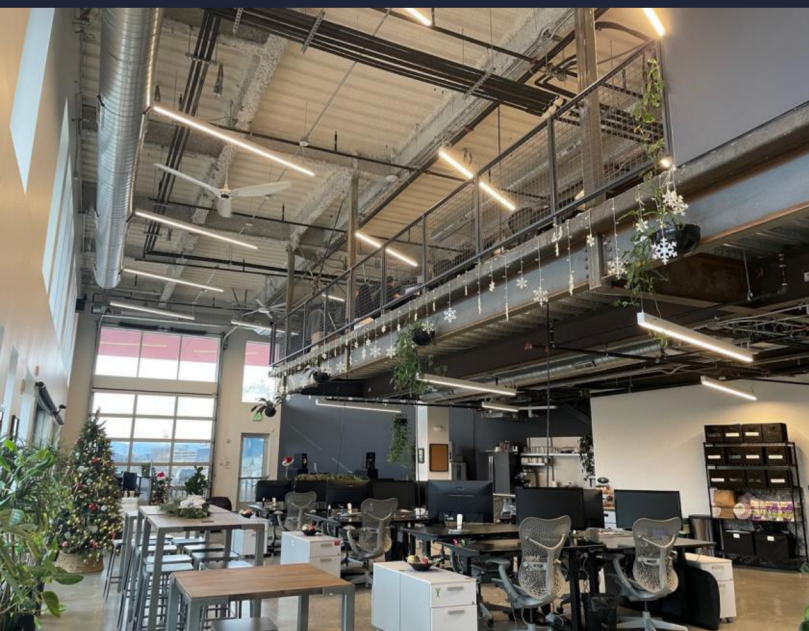
5,691 RSF

Term: Through Sept 30, 2024

Rental Rate: \$25.00/SF/YR NNN

Parking Included

Immediate Occupancy



AMY ALDRIDGE

PARTNER

amy@tributaryre.com

720-217-7340

MAX STANTON

ASSOCIATE BROKER

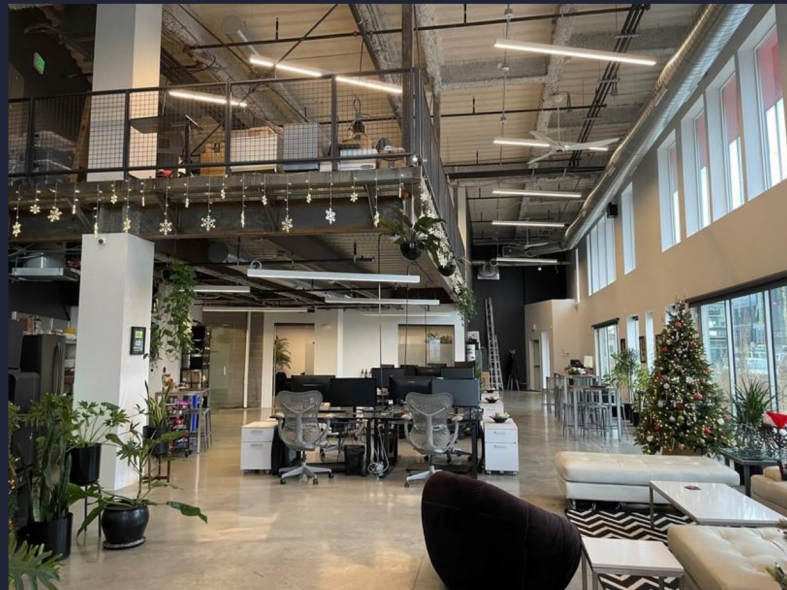
max@tributaryre.com

720-510-4940

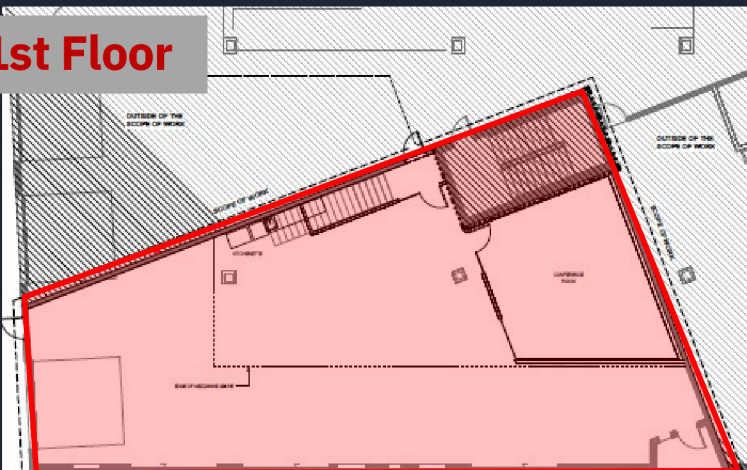
About The Space....



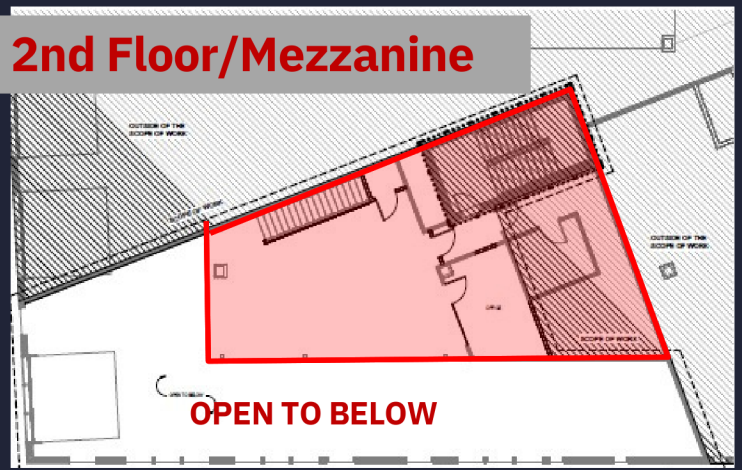
- 20 Workstations
- 1 Large Conference Room
- 1 Medium Conference Room
- Direct Access to Zeppelin Food Hall
- Roll Up Garage Door Windows
- Patio Access
- Private Exterior Entrance



1st Floor



2nd Floor/Mezzanine



AMY ALDRIDGE

PARTNER

amy@tributaryre.com

720-217-7340

MAX STANTON

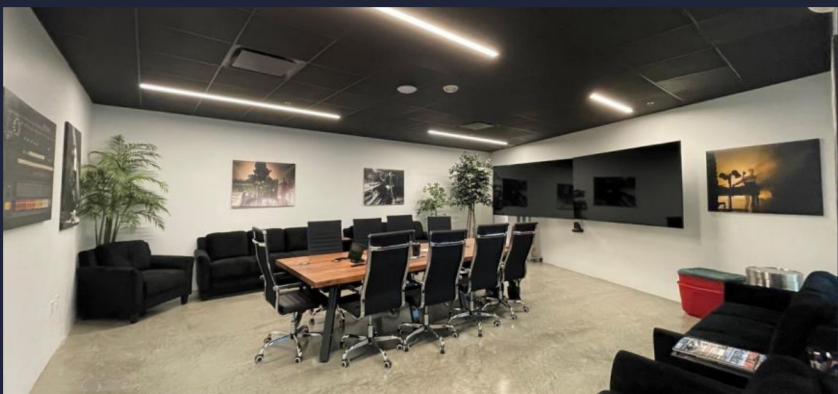
ASSOCIATE BROKER

max@tributaryre.com

720-510-4940



About The Building....



ZEPPELIN STATION

Zeppelin Station is a 100,000 square foot new-generation office building in Denver's River North neighborhood (RiNo), just northeast of downtown. The location, in a dynamic, gritty urban neighborhood with excellent amenities, is unique in its close proximity to one of the most stunning mountain environments in the world. In 2018, this building was awarded LEED certification at the Gold level by the U.S. Green Building Council. In terms of location, Denver has experienced incredible growth in the past decade, and no place is this boom more evident than in Platte River. The submarket encompasses Denver's fastest-growing neighborhoods, including Union Station and RiNo, where extensive revitalization has been on going. With opportunities for large-scale development few and far between in neighboring LoDo, development accelerated to staggering levels in Platte River in recent years.

AMY ALDRIDGE

PARTNER

amy@tributaryre.com

720-217-7340

MAX STANTON

ASSOCIATE BROKER

max@tributaryre.com

720-510-4940

