

FOR LEASE

6402 S Troy - Suite 330
Englewood



2,488 RSF

Term: Negotiable

Rental Rate: \$21.50/SF Gross

Immediate Occupancy

Parking Included

Furniture Included

AMY ALDRIDGE

PARTNER

amy@tributaryre.com

720-217-7340

MARK FLOERSCH

SENIOR BROKER

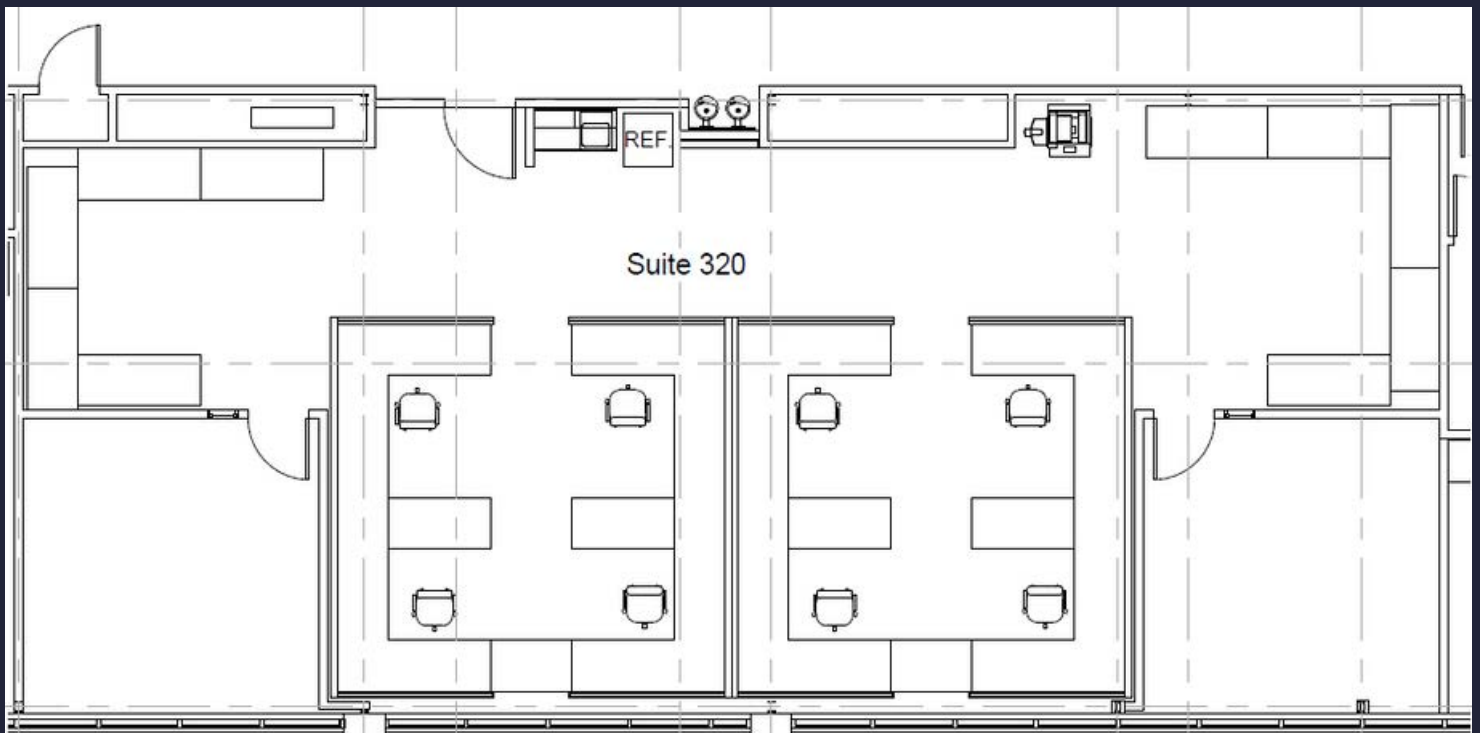
mark@tributaryre.com

847-204-2746

About The Space....



- 2 Private Offices
- 8 Workstations
- Small Kitchenette
- Furniture Available
- Parking 4/1000sf
- Property Manager On Site
- Fitness Center & Showers



AMY ALDRIDGE
PARTNER
amy@tributaryre.com
720-217-7340

MARK FLOERSCH
SENIOR BROKER
mark@tributaryre.com
847-204-2746



About The Building...



6402 South Troy

6402 S Troy is a Class B office building located in the southeast sector of Denver, Colorado. This three-story brick building offers great occupancy in the heart of the southeast suburban Denver office market. 6402 S Troy is located in close proximity to the Denver Tech Center, one of the area's most dynamic business-oriented developments. It is also within close proximity to I-25 with a plethora of great restaurants and entertainment nearby! DTC has three light rail stops located within the submarket, making it a prime location for transit-oriented development.



AMY ALDRIDGE

PARTNER

amy@tributaryre.com

720-217-7340

MARK FLOERSCH

SENIOR BROKER

mark@tributaryre.com

847-204-2746

