



FOR SUBLEASE

4700 S Syracuse St - Suite 600
Denver

6,738 RSF

Term: Through March 2024

Rental Rate: \$17/SF FSG

Immediate Occupancy

Parking Included

Furniture Negotiable



ANDY CULLEN

PARTNER

andy@tributaryre.com

720-933-9411

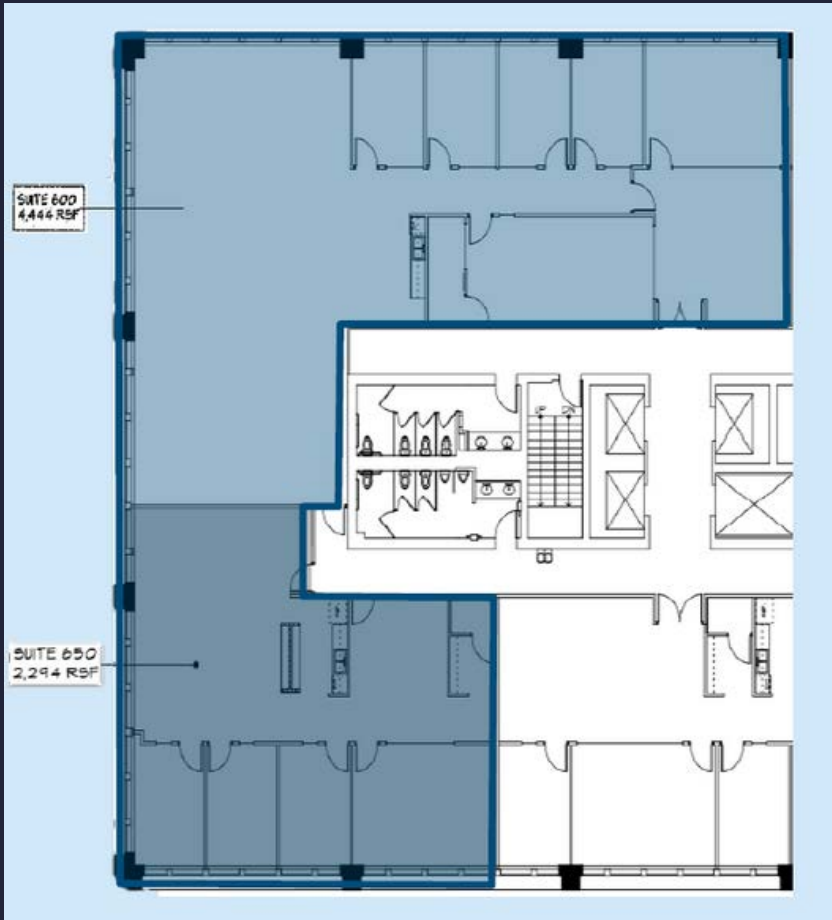
MARK FLOERSCH

SENIOR BROKER

mark@tributaryre.com

847-204-2746

About The Space....



- Light & Bright Office Space
- 2 Reception Areas
- 2 Kitchens
- 2 Conference Rooms
- 7 Offices
- 32 Cubes
- 1 Network Operations Center
- Fitness Center
- Secured Bike Center
- 3.5/1000sf Surface Parking



ANDY CULLEN
PARTNER
andy@tributaryre.com
720-933-9411

MARK FLOERSCH
SENIOR BROKER
mark@tributaryre.com
847-204-2746



About The Building...



DENVER CORPORATE CENTER 1

Denver Corporate Center 1 is approximately 194,000 square foot, 11-story office building with column-free floorplates in Denver Tech Center North. Easy access to I-25, I-225, light rail, DIA and Centennial Airport, with numerous hotels and restaurants in a quarter-mile radius. On-site property management. The newly renovated lobby includes the Craft Café. Additional amenities include a new state-of-the-art fitness center with spinning room, showers and lockers, tenant lounge, conference room, training room, secured bike storage. Surface parking at 3 per 1,000 SF.

ANDY CULLEN

PARTNER

andy@tributaryre.com

720-933-9411

MARK FLOERSCH

SENIOR BROKER

mark@tributaryre.com

847-204-2746

