



REDUCED RATE!



FOR SUBLEASE

373 Inverness Pky Suite 110, Englewood

15,123 RSF

Term: Through August 2023

Rental Rate: ~~\$18/SF FSG~~

\$12/SF FSG

Parking: Included

Furniture: Negotiable

Occupancy: Immediate



ANDY CULLEN

PARTNER

andy@tributaryre.com

720-933-9411

MICHAEL HARPOLE

SENIOR BROKER

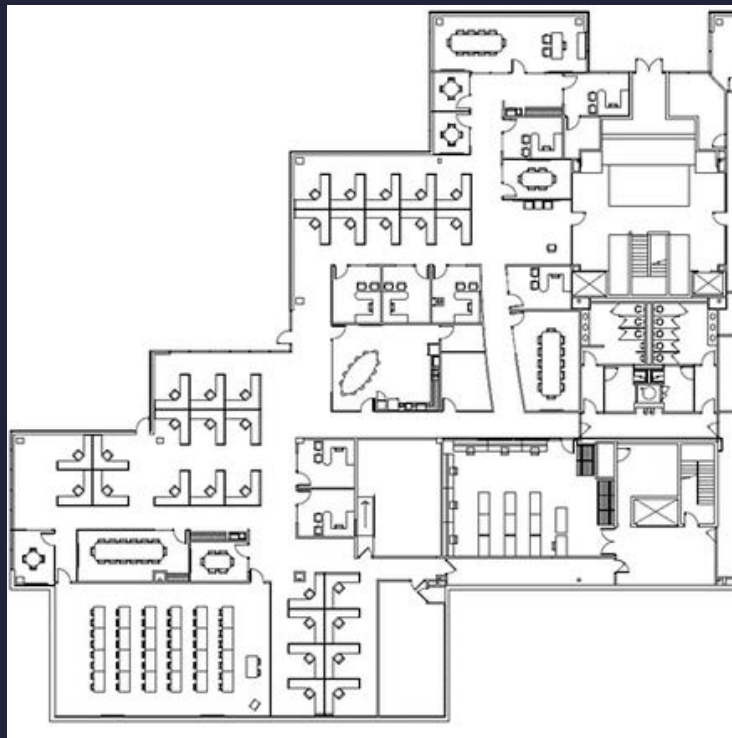
mike@tributaryre.com

303-880-8770

About The Space....



- 8 Private Offices
- 31 Workstations
- 5 conference rooms
- 50 person training room
- 3 huddle rooms
- Full kitchen and break room
- Raised floor data center
- Technical build area / lab
- Private patio and entrance
- Freight elevator



ANDY CULLEN
PARTNER
andy@tributaryre.com
720-933-9411

MICHAEL HARPOLE
SENIOR BROKER
mike@tributaryre.com
303-880-8770



About The Building...



373 INVERNESS

This quality flex building features a reflective glass exterior, increased capacity HVAC, raised floor, and backup power. There is also a commercial freight elevator and loading area. The property is conveniently situated 1/4 mile south of Inverness Business Park's main entrance and adjacent to Centennial Airport. It has great access to C-470 and I-25. In addition, Park Meadows Mall, Colorado Athletic Club, and Inverness Hotel & Golf Resort are only seconds away. Parking is allocated at 3.46 spots per 1,000sf. Close proximity to Park Meadows Mall .Near Colorado Athletic Club & Inverness Hotel and Golf Resort. Quick drive to a surplus of restaurants

ANDY CULLEN

PARTNER

andy@tributaryre.com

720-933-9411

MICHAEL HARPOLE

SENIOR BROKER

mike@tributaryre.com

303-880-8770

