



SUITE 205 – 1,100 SF FOR LEASE
8380 ZUNI STREET



MICHAEL HARPOLE
mike@tributaryre.com
303-880-8770

JONA BEHM
jona@tributaryre.com
720-394-8694

ABOUT THE SPACE...

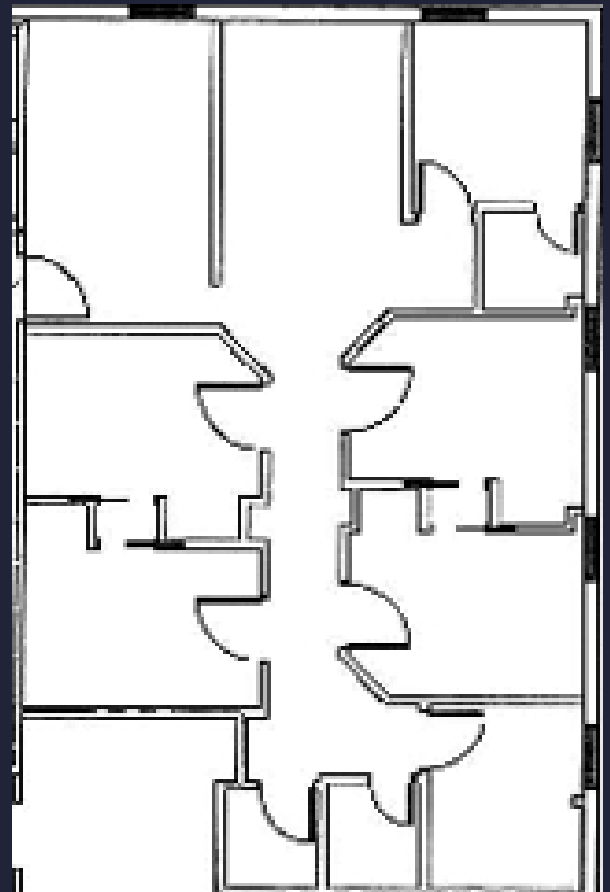


\$14.00 / SF Full Service
\$1,283 / Month

- Built-in window reception desk
- 3 Private Offices
- 1 Large Executive Office or Conference Room
- 3 Private Bathrooms
- 2 Additional Sinks



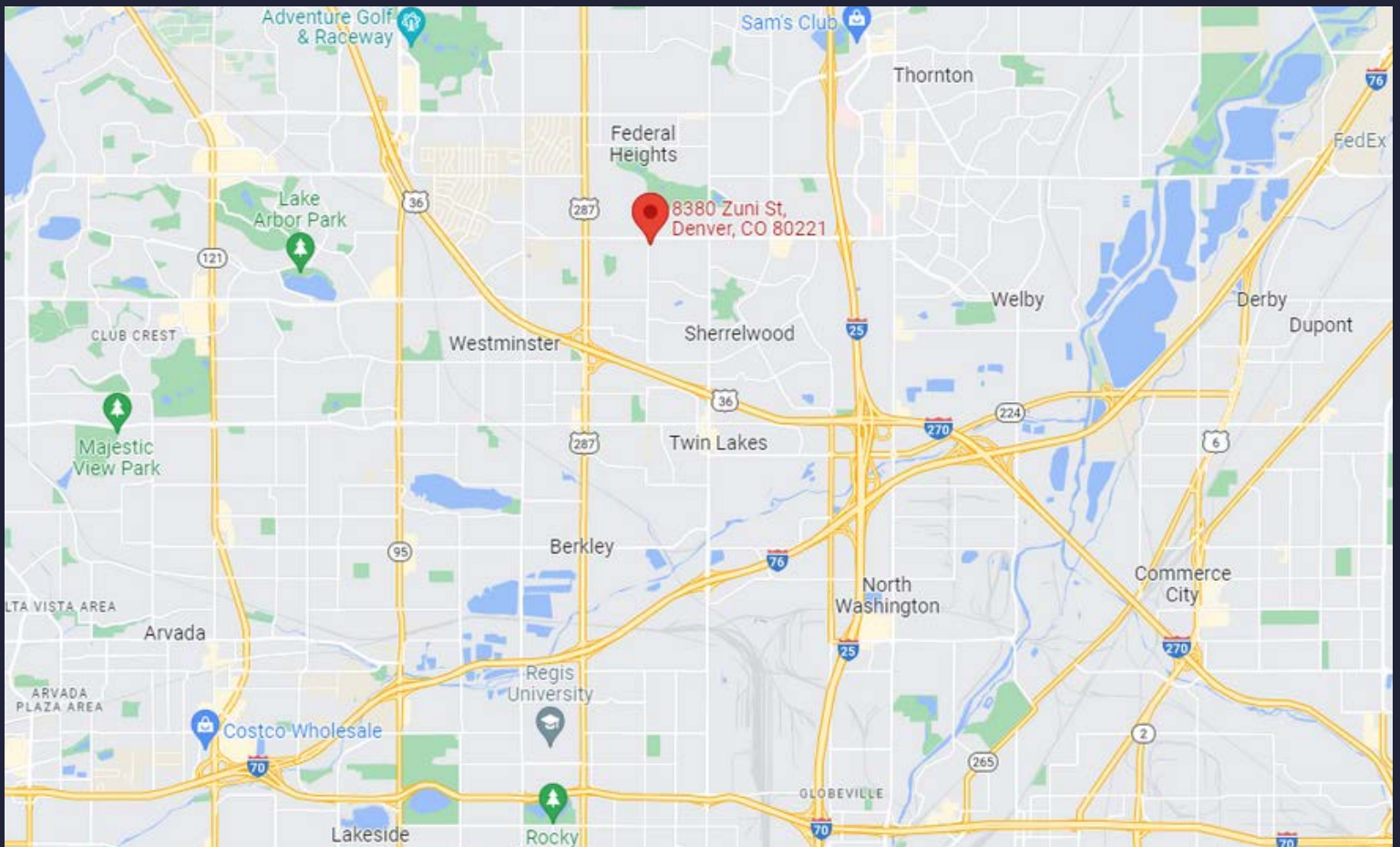
Suite 205 - 1,100 SF



Potential Uses:
Standard Office | Medical
Office | Mental Health Center |
Chiropractor

ABOUT THE BUILDING...

- Parking Ratio 5.16 / 1,000 SF
- Easy access to major highways
- 15 Minutes to Downtown Denver
- 25 Minutes to Boulder
- Local ownership



MICHAEL HARPOLE
mike@tributaryre.com
303-880-8770

JONA BEHM
jona@tributaryre.com
720-394-8694