

# FOR SUBLEASE

TAXI | DRIVE 2  
3461 Ringsby Court  
Denver, CO 80216  
Suite 345



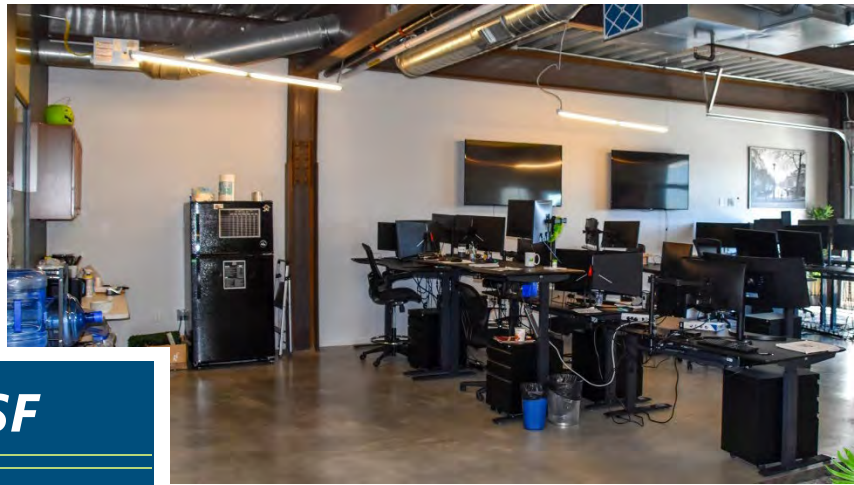
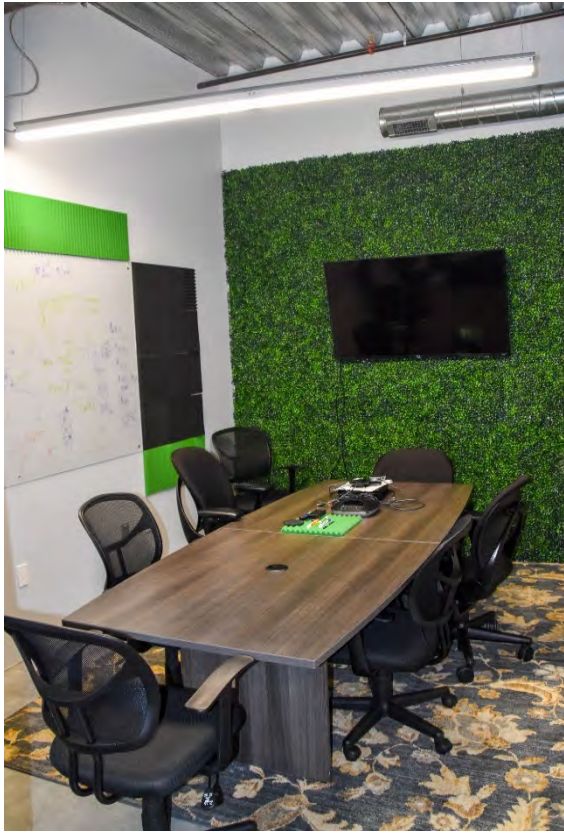
**Rate: \$34.00 / SF Gross)**

**AMY ALDRIDGE**  
AMY@TRIBUTARYRE.COM  
720-217-7340

**MICHAEL HARPOLE**  
MIKE@TRIBUTARYRE.COM  
303-880-8770

# FOR SUBLEASE

TAXI | DRIVE 2  
3461 Ringsby Court  
Denver, CO 80216  
Suite 345



## SUITE 345 | 1,683 RSF

- ❖ Term through February 2023
- ❖ Light and bright creative space
- ❖ 3 private offices
- ❖ Room for 6-8 workstations
- ❖ Roll-up garage door
- ❖ High ceilings
- ❖ Shared kitchenette
- ❖ Furniture Negotiable
- ❖ Downtown facing views
- ❖ Access to Taxi Campus amenities





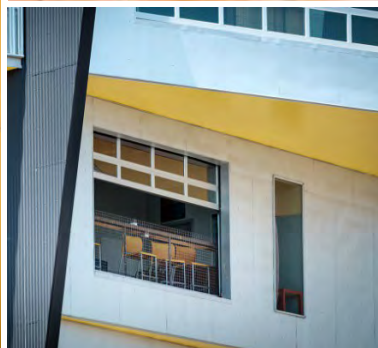
# FOR SUBLEASE

TAXI | DRIVE 2  
3461 Ringsby Court  
Denver, CO 80216  
Suite 345



T  
A  
X  
I

BY ZEPPELIN DEVELOPMENT



## TAXI CAMPUS AMENITIES

- ❖ POOL
- ❖ ON SITE GYM & STEAM ROOM
- ❖ COFFEE COUNTER
- ❖ SANDWICH SHOP WITH OUTDOOR SEATING
- ❖ VOLLEYBALL COURT
- ❖ PLAYGROUND & BASKETBALL HOOP
- ❖ COMMUNITY GARDEN
- ❖ ACCESS TO BIKE PATH ALONG THE PLATTE RIVER