

# FOR SUBLEASE

1600 Wynkoop St  
Suite #202 &/OR Basement  
Denver, CO 80202



## AVAILABLE IMMEDIATELY | PLUG-N-PLAY

**AMY ALDRIDGE**  
AMY@TRIBUTARYRE.COM  
720-217-7340

**ANDY CULLEN**  
ANDY@TRIBUTARYRE.COM  
720-933-9411

# PRIME LODO OFFICE SUBLEASE

**SUITE 202  
KITCHETTE**



**SUITE 202  
OPEN OFFICE**



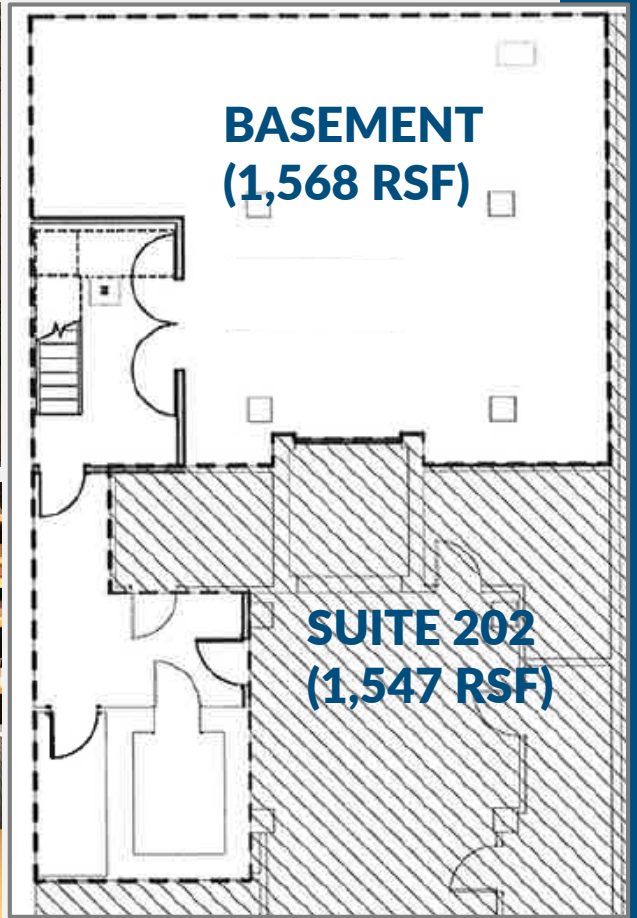
## **SUBLEASE HIGHLIGHTS:**

- ❖ RATE: NEGOTIABLE
- ❖ TERM: THROUGH MARCH 2022
- ❖ SUITE 202: 1,547 RSF
- ❖ BASEMENT: 1,568 RSF
- ❖ CAN BE SUBLEASED TOGETHER OR SEPARATE (3,115 RSF TOTAL)
- ❖ FURNITURE AVAILABLE
- ❖ 2<sup>nd</sup> FLOOR KITCHENETTE + RESTROOM
- ❖ SEPARATE ENTRY FOR SUITE 202
- ❖ EXCELLENT LOCATION!

# PRIME LODO OFFICE SUBLEASE



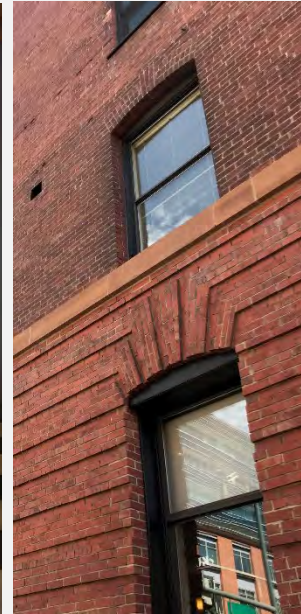
**BASEMENT  
BREAKOUT SPACE**



**SHARED 1<sup>ST</sup> FLOOR  
SMALL CONFERENCE**



**SHARED 1<sup>ST</sup> FLOOR  
LARGE CONFERENCE**



# PRIME LODO OFFICE SUBLEASE

