

FOR SUBLEASE

THE BOATHOUSE
1850 Platte St
Denver, CO 80202
Suite 300



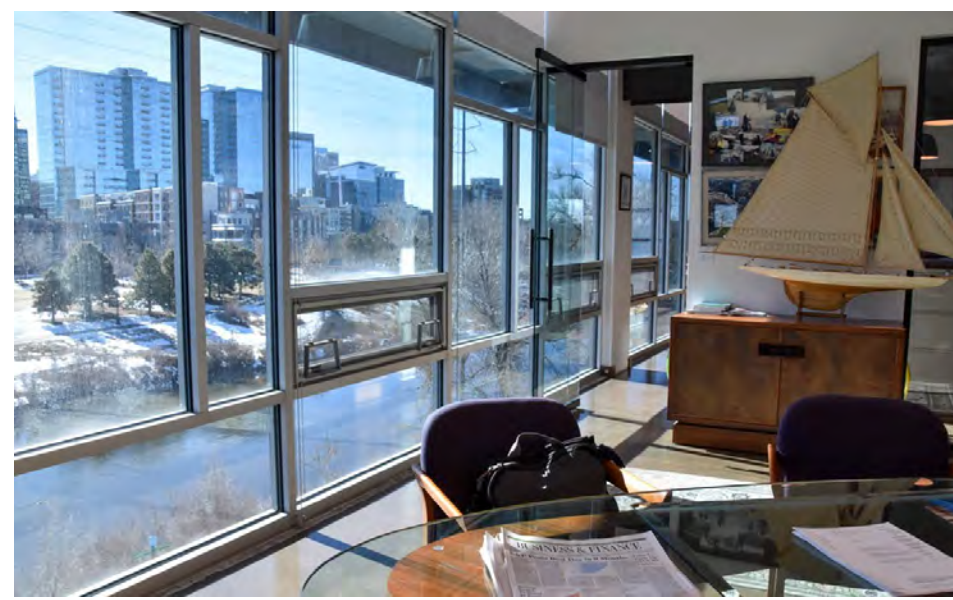
Rate: \$27.00 / SF NNN

NATALIE FROLAND
NATALIE@TRIBUTARYRE.COM
970-846-7549

MICHAEL HARPOLE
MIKE@TRIBUTARYRE.COM
303-880-8770

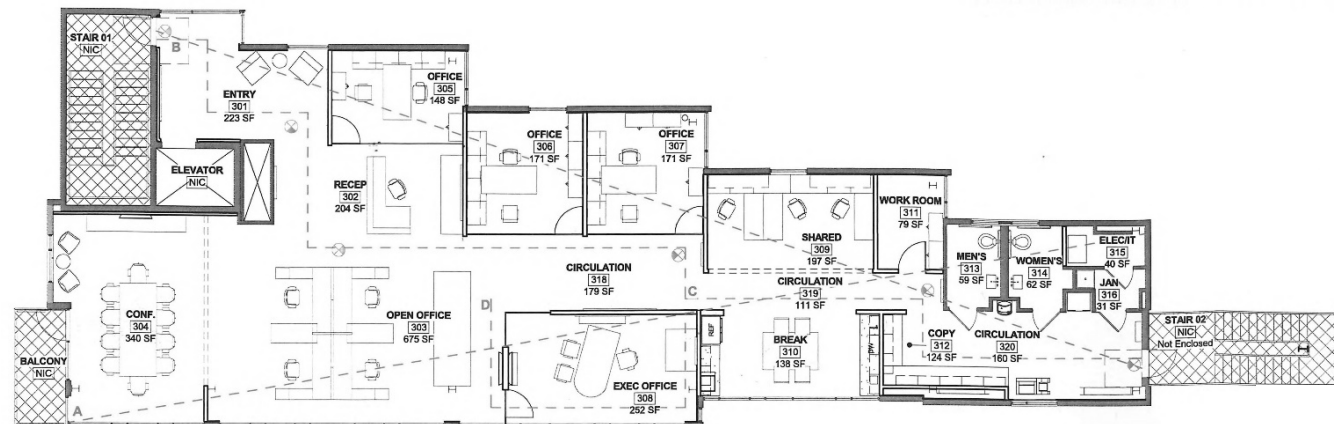
FOR SUBLEASE

THE BOATHOUSE
1850 Platte St
Denver, CO 80202
Suite 300



SUITE 300 | 3,539 RSF

- Light & Bright Office Space
- Private Offices: 5
- Workstations: 5 - 8
- Medium Conference Room
- Balcony Facing Downtown
- Work Room + Full Kitchen
- IT/Storage Closet
- Term Through September 2023
- Est. OpEx \$22/SF



FOR SUBLEASE



HIGHLIGHTS

- Parking: 3 Reserved Covered Spaces
- Entire 3rd Floor of Boathouse Bldg
- Year of Construction: 2015
- Easy Access to I-25 And Downtown
- Proximity to Platte Street Retail
- 270-degree View of Denver

NATALIE FROLAND

NATALIE@TRIBUTARYRE.COM
970-846-7549

MICHAEL HARPOLE

MIKE@TRIBUTARYRE.COM
303-888-8770

