

FOR SUBLEASE

One Cherry Center
501 S Cherry St
Denver, CO 80246
Suite 480 | 3,174 SF



ONE CHERRY CENTER

AMY ALDRIDGE

AMY@TRIBUTARYRE.COM
720-217-7340

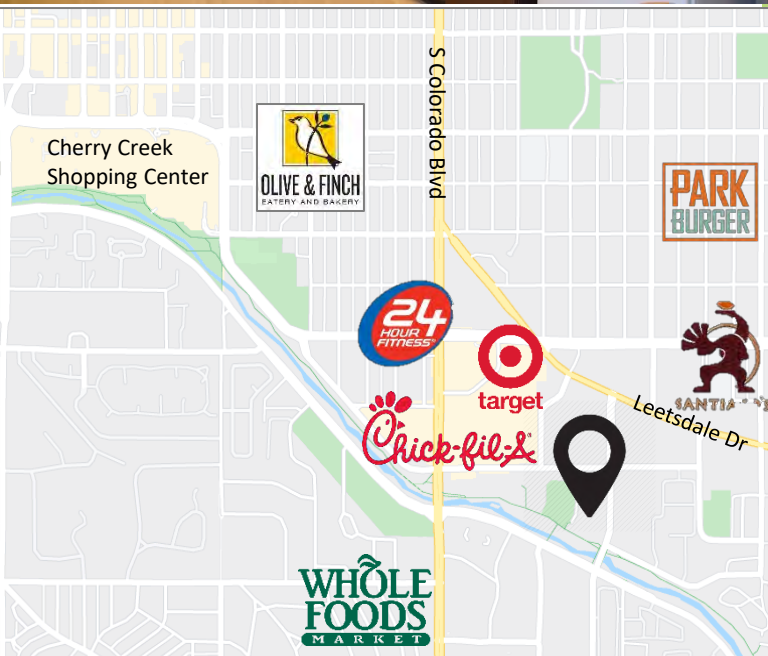
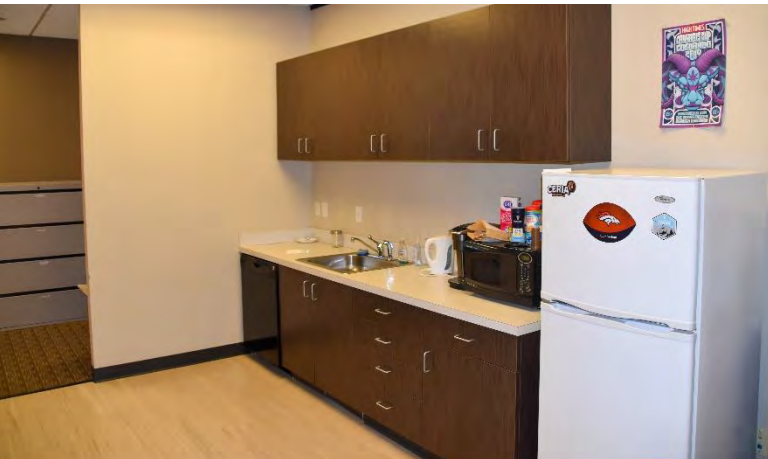
MICHAEL HARPOLE

MIKE@TRIBUTARYRE.COM
303-888-8770

Rate: \$26.00/SF FSG

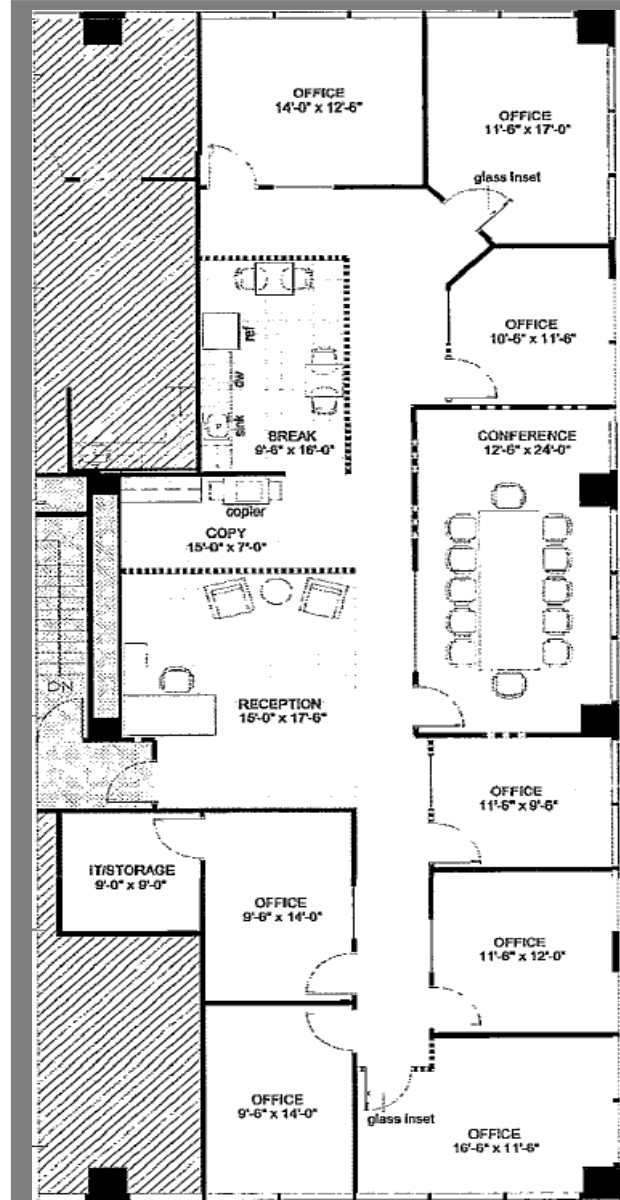
FOR SUBLEASE

501 S Cherry St
Denver, CO 80246
Suite 480
3,174 SF



- ❖ TERM THROUGH MARCH 2022
- ❖ PARKING: 3/1,000
- ❖ EASY ACCESS TO I-25
- ❖ CLOSE PROXIMITY TO CHERRY CREEK
- ❖ NEW WORKOUT FACILITY
- ❖ NEW OUTDOOR TENANT PAVILION
- ❖ COMMON AREA REMODEL ONGOING
- ❖ ON SITE ENGINEER & SECURITY

GLENDALE OFFICE SPACE AVAILABLE FOR SUBLEASE



SUITE 480 | 3,174 RSF

- ❖ LIGHT AND BRIGHT OFFICE SPACE
- ❖ 8 PRIVATE OFFICES
- ❖ MEDIUM CONFERENCE ROOM
- ❖ RECEPTION DESK
- ❖ KITCHENETTE
- ❖ COPY ROOM
- ❖ IT/STORAGE CLOSET

