

# FOR SUBLEASE

2930 Umatilla  
Suite 200  
Denver, CO 80211  
2,354 SF

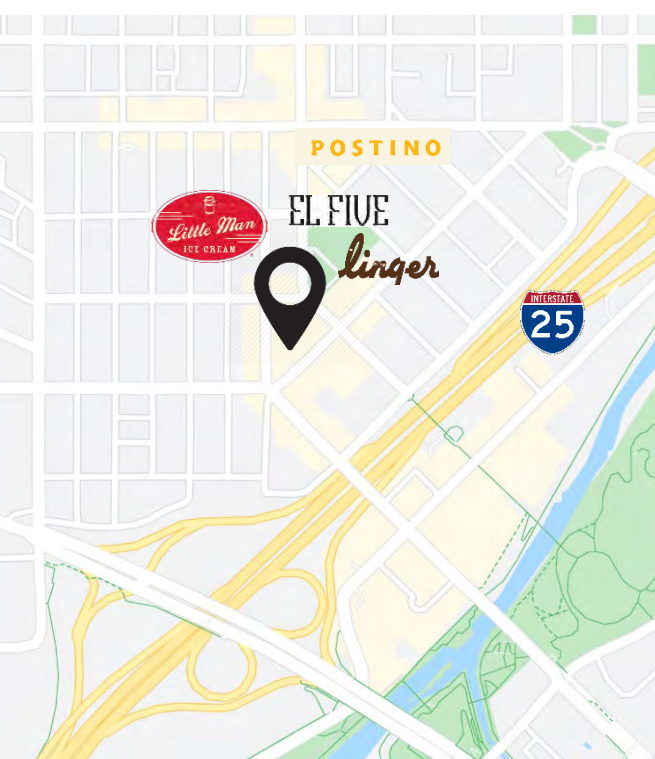
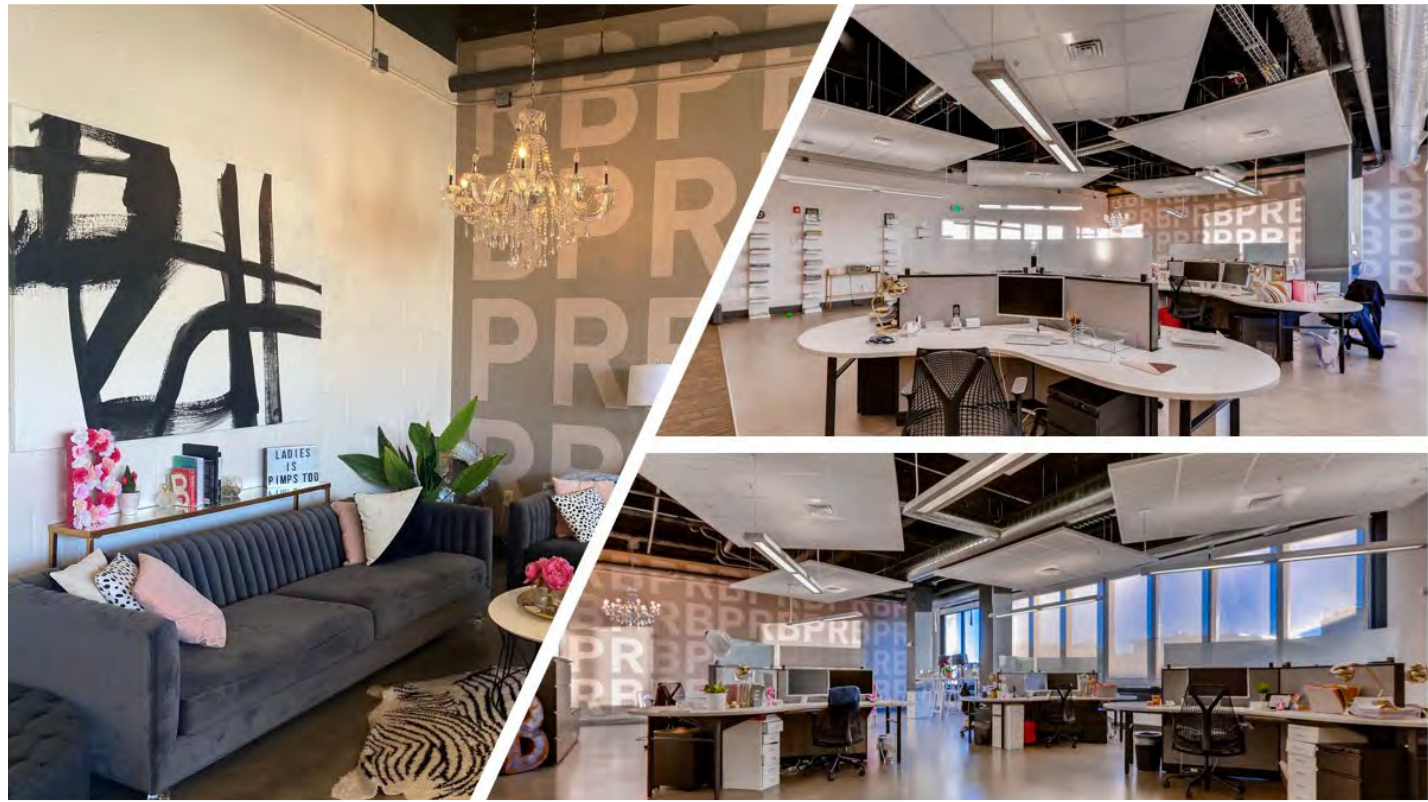


## RATE: NEGOTIABLE

**ANDY CULLEN**  
ANDY@TRIBUTARYRE.COM  
720-933-9411

**NATALIE GEER**  
NATALIE@TRIBUTARYRE.COM  
970-846-7549

# LOCATED IN THE HEART OF LOHI



**TERM THROUGH MARCH 2022**

**LOHI'S ONLY CLASS A OFFICE BUILDING**

**IDEAL LOCATION WITH DOZENS OF RESTAURANTS IN WALKING DISTANCE**

**4 COVERED PARKING SPACES**

**FURNITURE NEGOTIABLE**

# **CREATIVE TECH SPACE FOR SUBLEASE**



**LARGE NANO DOORS WITH WESTERN  
FACING VIEWS**

**15 WORKSTATIONS**

**MEDIUM CONFERENCE ROOM**

**MODERN KITCHENETTE**

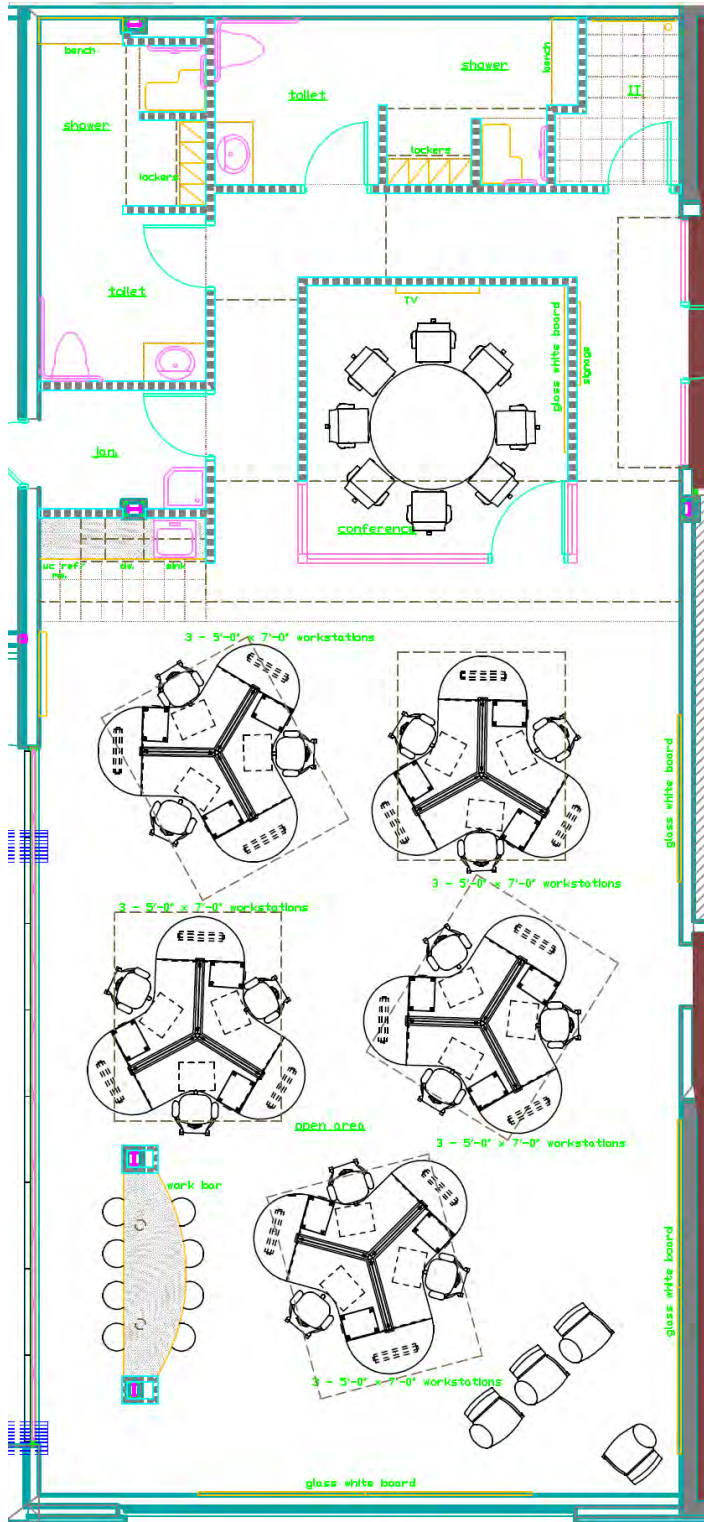
**COPY / SERVER ROOM**

**2 PRIVATE RESTROOMS WITH SHOWERS**

**HIGH CEILINGS THROUGHOUT**



# 2930 Umatilla, Suite 200 | 2,354 SF





**ANDY CULLEN**

ANDY@TRIBUTARYRE.COM  
720-933-9411

**NATALIE GEER**

NATALIE@TRIBUTARYRE.COM  
970-846-7549