

FOR SUBLEASE

LoDo Towers
1401 17th St
SUITE 525
5,590 SF



AMY ALDRIDGE
AMY@TRIBUTARYRE.COM
720-217-7340

JONA BEHM
JONA@TRIBUTARYRE.COM
720-394-8694



RATE: NEGOTIABLE

WWW.TRIBUTARYRE.COM

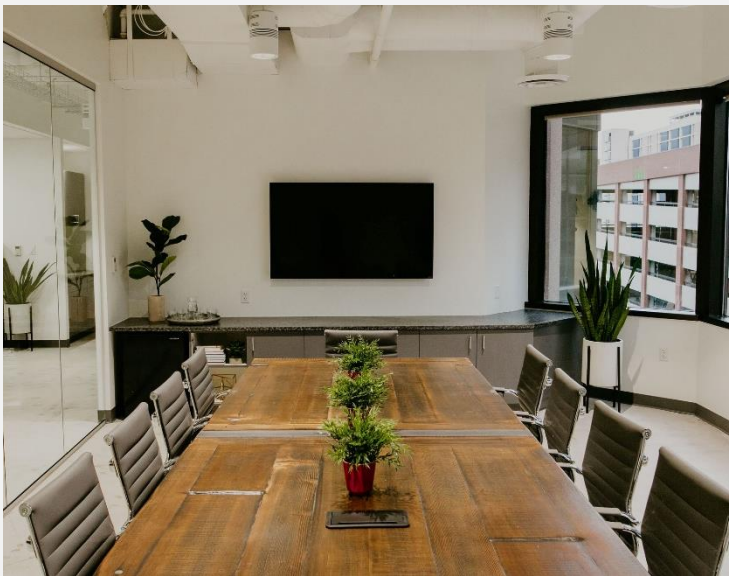
FOR SUBLEASE

LoDo Towers
1401 17th St
SUITE 525
5,590 SF



SUITE 525 | 5,590 SF

- Elevator identity
- West-facing mountain views
- 7 offices, breakroom, large conference, reception, 2 huddles, & open office
- Open plenum ceilings throughout
- Furniture negotiable
- Term through June 2026



BUILDING HIGHLIGHTS

- New building amenity center
- Highest parking ratio in Downtown
- Walking distance to amenities
- Extensive building remodel underway

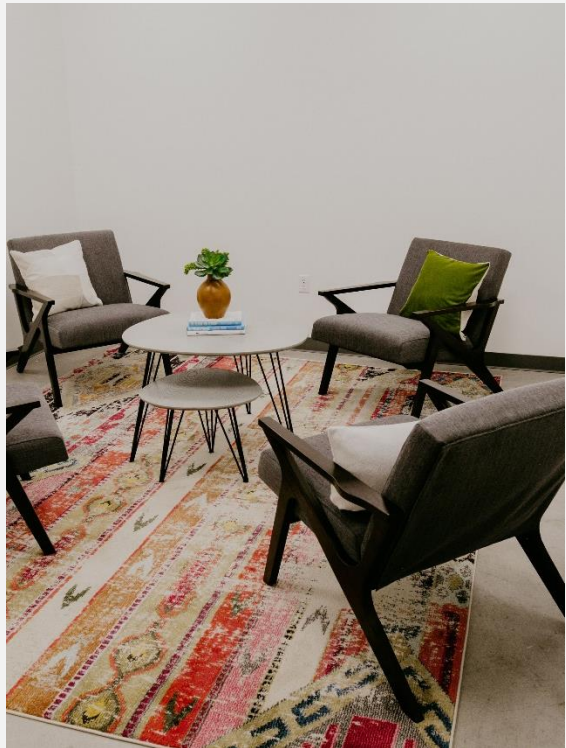
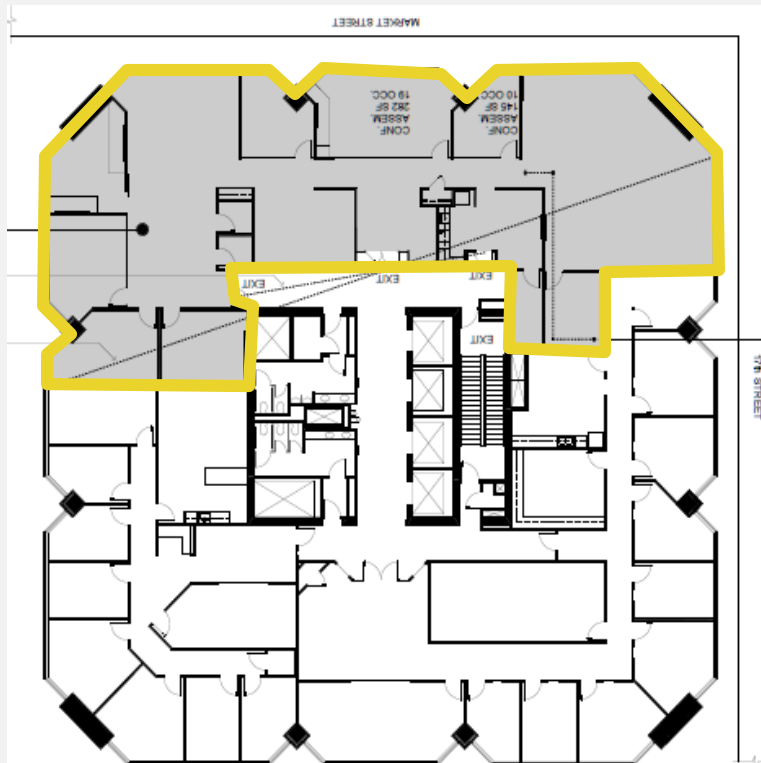


FOR SUBLEASE

LoDo Towers
1401 17th St
SUITE 525
5,590 SF



SUITE 525



FOR SUBLEASE

LoDo Towers
1401 17th St
SUITE 525
5,590 SF



Located in the heart of LoDo
Two blocks from Union Station & numerous walkable amenities

