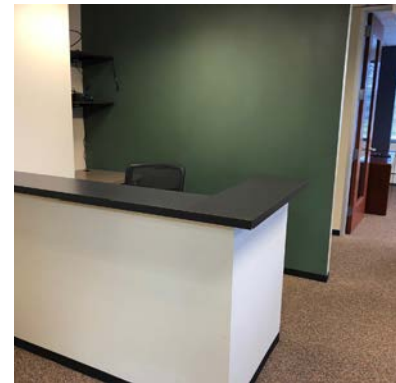
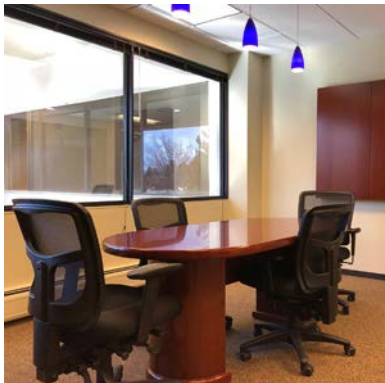




FOR SUBLEASE

9137 E MINERAL CIR
ENGLEWOOD, COLORADO

1,783 SF OFFICE



RATE: NEGOTIABLE

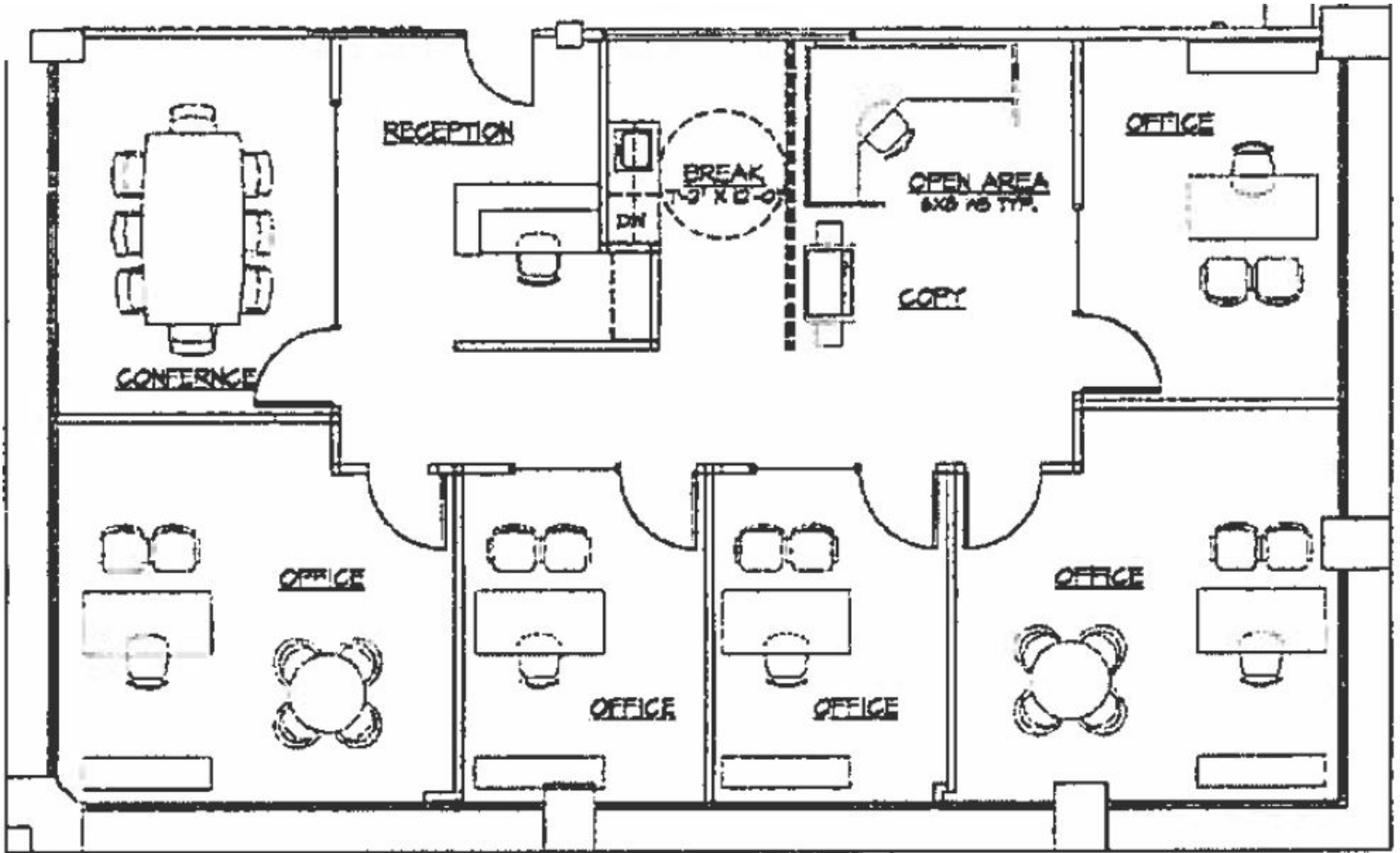
ANDY CULLEN
ANDY@TRIBUTARYRE.COM
720-933-9411

JAKE GUSTAFSON
JAKE@TRIBUTARYRE.COM
402-740-5414

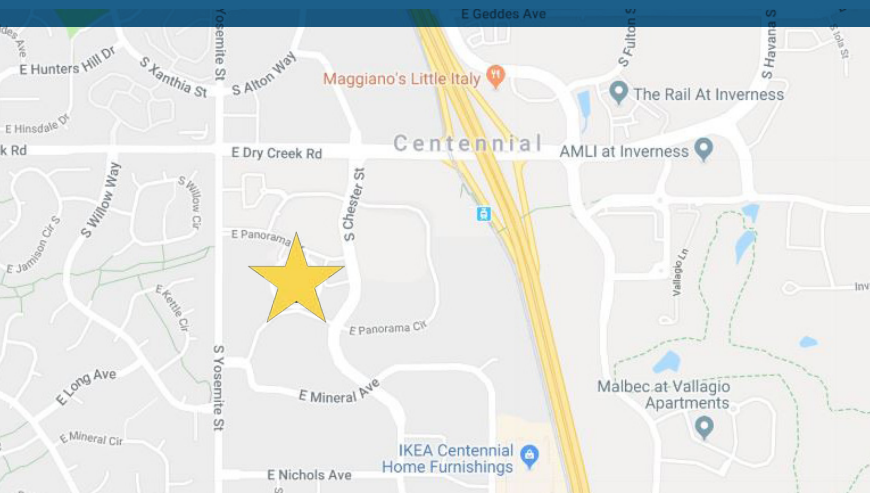
GRANT OLIVER
GRANT@TRIBUTARYRE.COM
614-499-7563

WWW.TRIBUTARYRE.COM

SUITE 280
1,783 SF



LOCATED OFF OF I-25 AND E DRY CREEK RD



- SUITE 280: 1,783 SF
- RATE: NEGOTIABLE
- TERM: THROUGH 11/30/19
- FURNITURE AVAILABLE
- LAYOUT:
 - 5 OFFICES
 - 1 CONFERENCE ROOM
 - RECEPTION
 - BREAK ROOM
 - 1 WORK STATION
- EASY ACCESS TO I-25
- COVERED PARKING