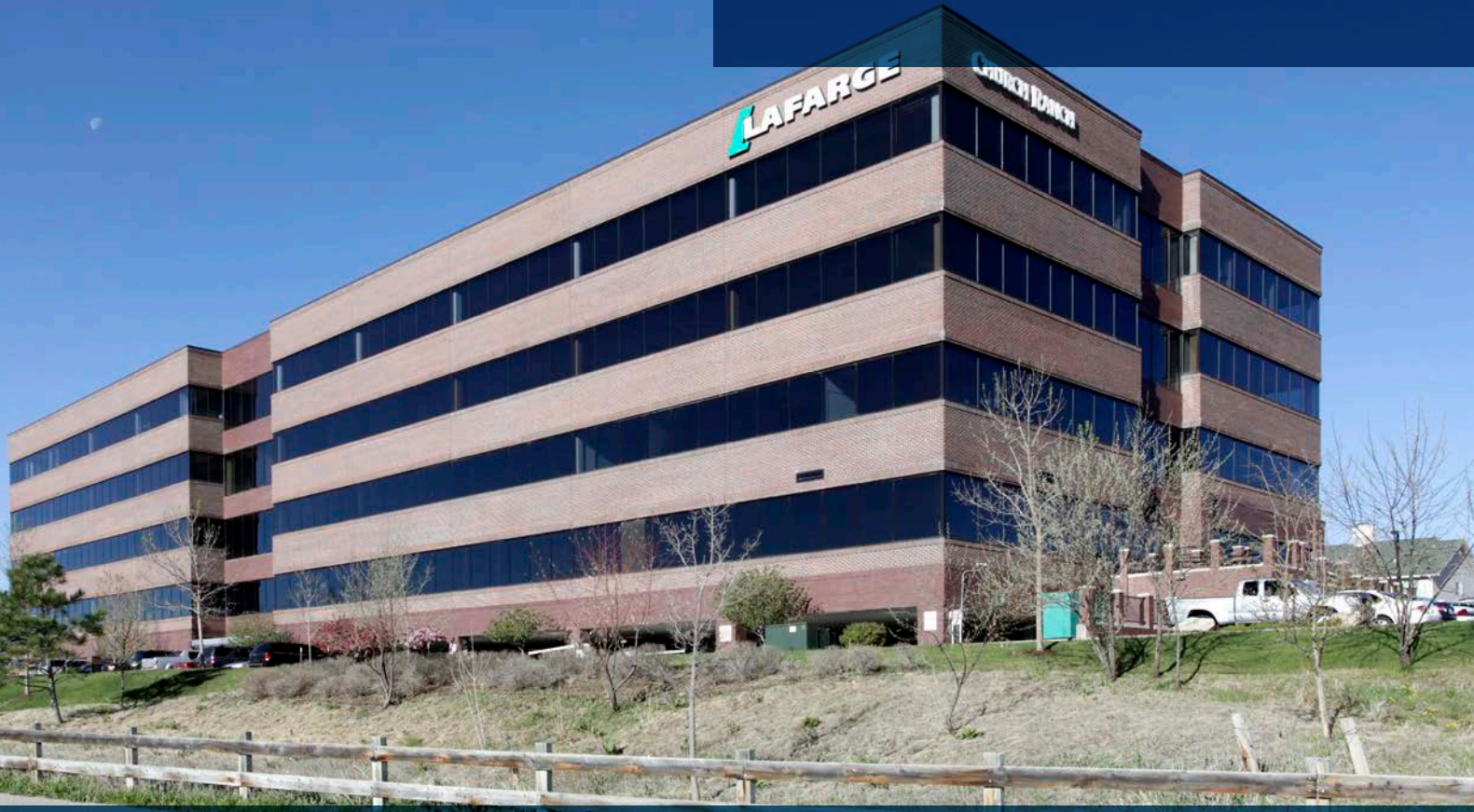




FOR SUBLEASE

10170 CHURCH RANCH WAY
WESTMINSTER, COLORADO

13,032 SF OFFICE



RATE: NEGOTIABLE

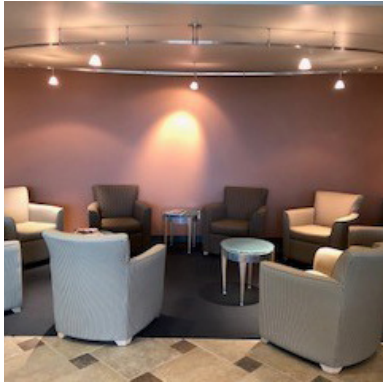
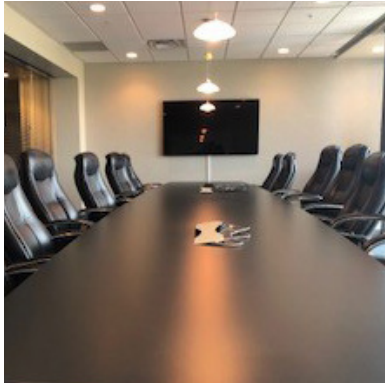
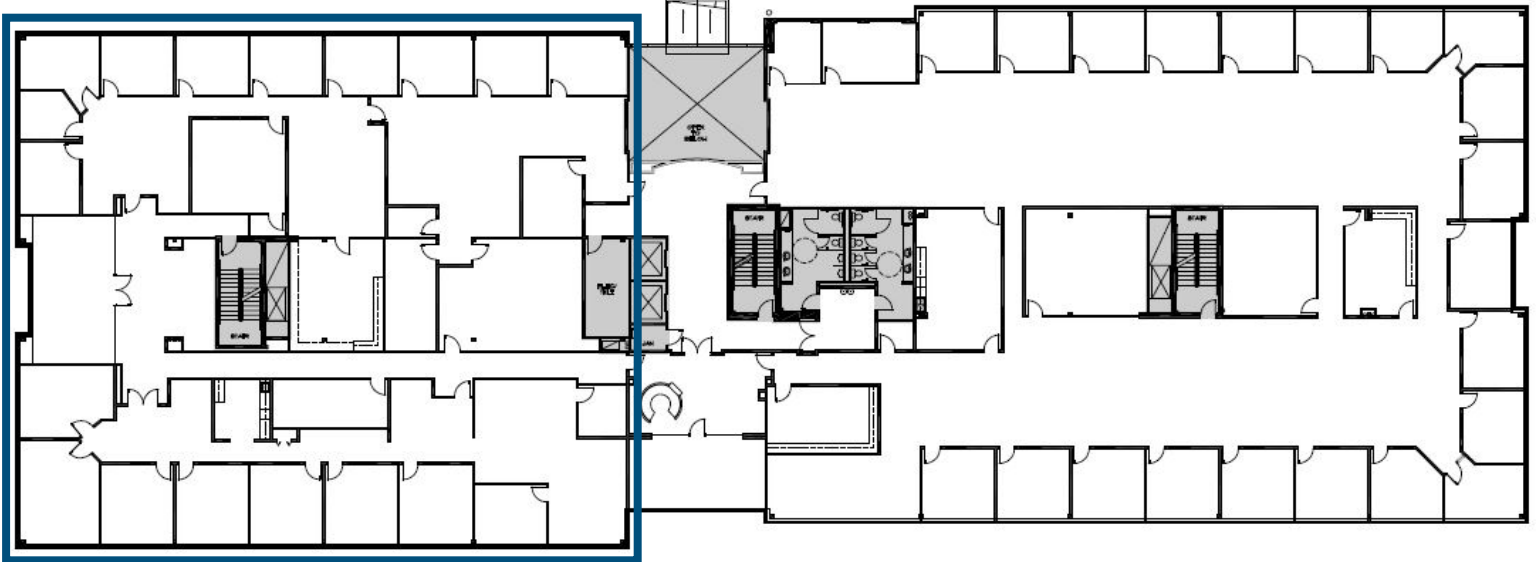
ANDY CULLEN
ANDY@TRIBUTARYRE.COM
720-933-9411

GRANT OLIVER
GRANT@TRIBUTARYRE.COM
614-499-7563

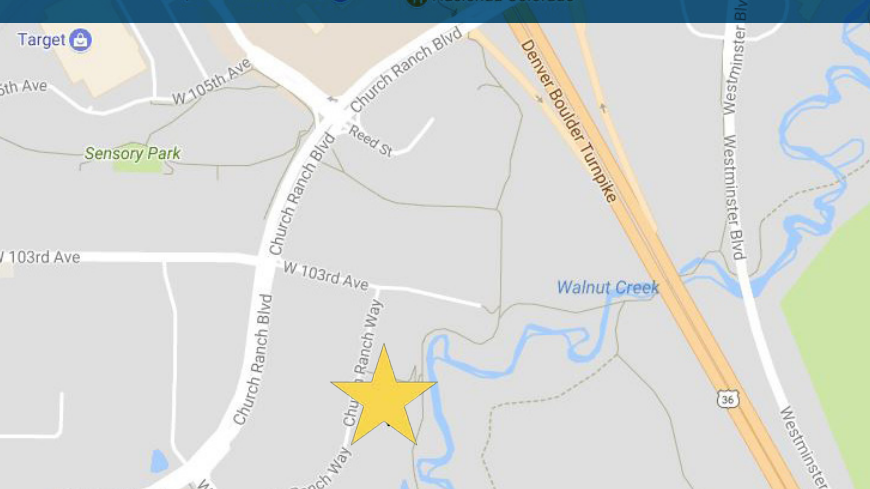
JONA BEHM
JONA@TRIBUTARYRE.COM
720-394-8694

WWW.TRIBUTARYRE.COM

SUITE 200 13.032 SF



LOCATED OFF OF CHURCH RANCH BLVD AND HW36



- SUITE 200: 13,032 SF
- RATE: NEGOTIABLE
- TERM: THROUGH 3/31/20
- FURNITURE AVAILABLE
- LAYOUT:
 - 19 OFFICES
 - 21 WORKSTATIONS
 - 2 KITCHENS
 - WORK ROOM