



FOR SUBLEASE

5500 GREENWOOD PLAZA BLVD
ENGLEWOOD, COLORADO

4,548 SF OFFICE

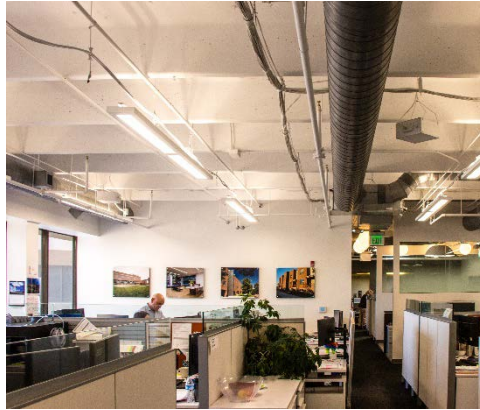


RATE: \$23.00 / SF FSG

ANDY CULLEN
ANDY@TRIBUTARYRE.COM
720-933-9411

AMY ALDRIDGE
AMY@TRIBUTARYRE.COM
720-217-7340

WWW.TRIBUTARYRE.COM



SUITE 220
4,548 SF

- OPEN OFFICE LAYOUT PERFECT FOR TECH/CREATIVE OFFICE USERS, LOTS OF NATURAL LIGHT, EXPOSED CEILING
- TERM: THROUGH 7/31/20
- FURNITURE NEGOTIABLE
- LOCATED WITHIN WALKING DISTANCE TO ORCHARD AND BELLEVUE LIGHT RAIL STATIONS AND THE LANDMARK

